



Setting environment for use with Web Signage Player

Environment configuration

To play multimedia contents, you need an unattended PC running the player software continuously, even if a power outage occurs. So it is advisable to use an uninterruptible power supply, possibly able to cleanly shut down the computer if a prolonged outage occurs.

The following instructions are meant for Windows XP but can be easily applied to Windows Vista.

Autologon

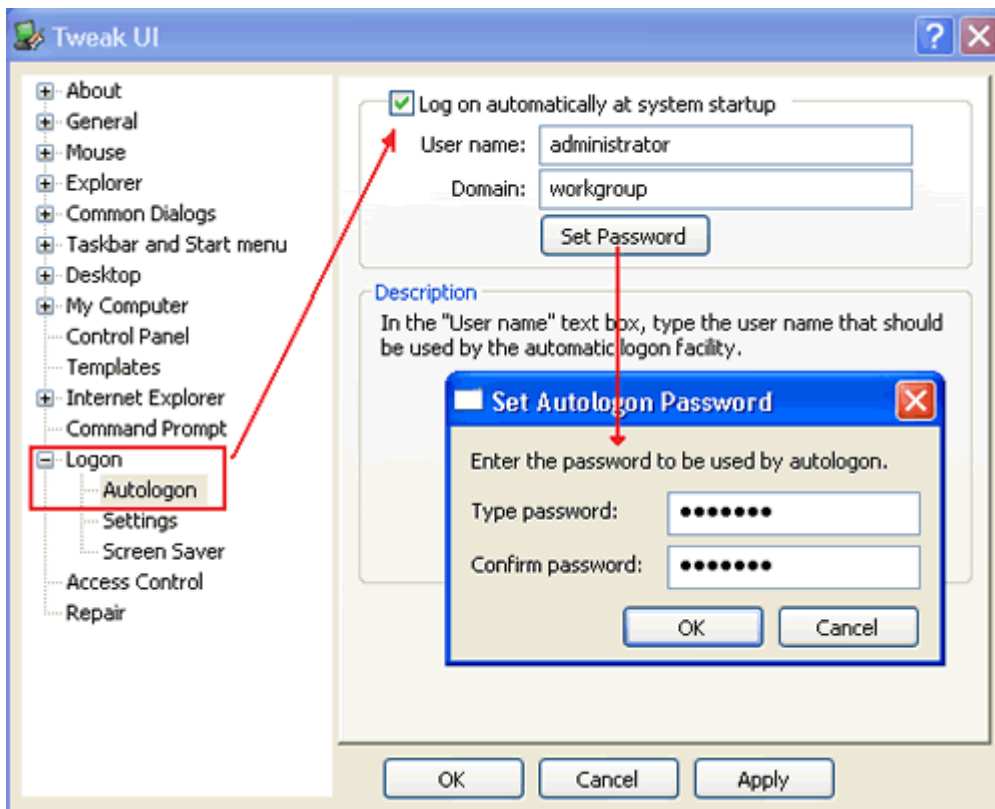
It's important for our purposes to provide an automatic startup skipping the operating system authentication process. This is achieved by maintaining only one administrator account within the user control panel (default configuration).

If an additional user is needed, the operating system will start to ask to select the user account at logon, stopping an unattended startup.

We need to setup an automatic logon using an appropriate software like Tweak UI, a free tool supplied with Microsoft PowerToys for Windows XP.

Download the PowerToys from <http://download.microsoft.com/download/whistler/Install/2/WXP/EN-US/CommandHerePowerToySetup.exe>, install (you need to be a system administrator) and proceed as follows:

- Start TweakUI: **Start > All Programs > Powertoy for Windows XP > Tweak UI**



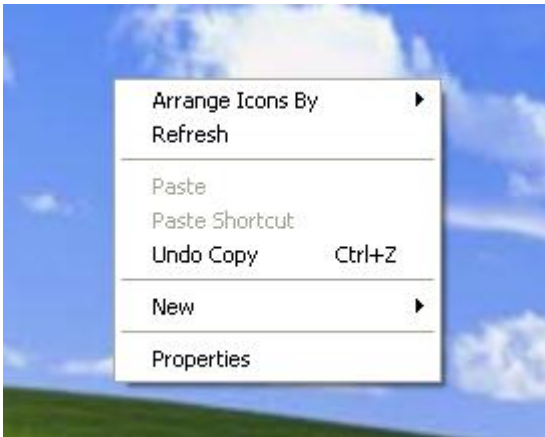
- Expand the **Logon** node and select **Autologon**
- Check **Log on automatically at system startup**, click on **Set Password**. A popup is shown. Type the administrator password and click on **OK**

From now on (at least until you don't make changes to the administrator password or you disable the autologon feature) the PC will be able to make a unattended boot.

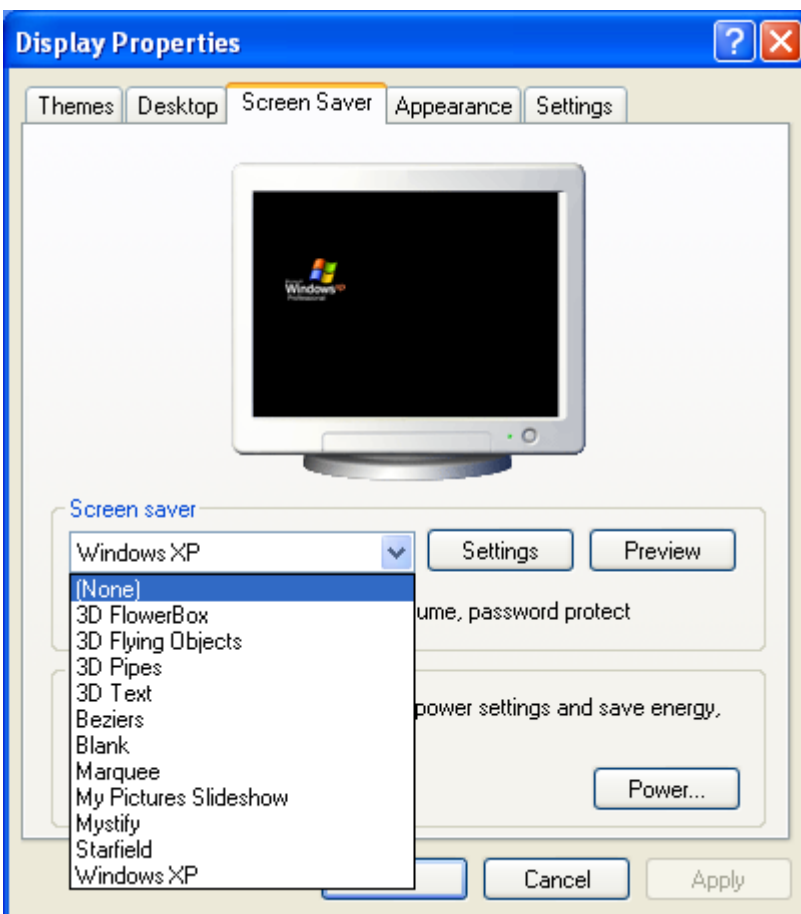
Other settings

For best results we strongly advise the following settings.

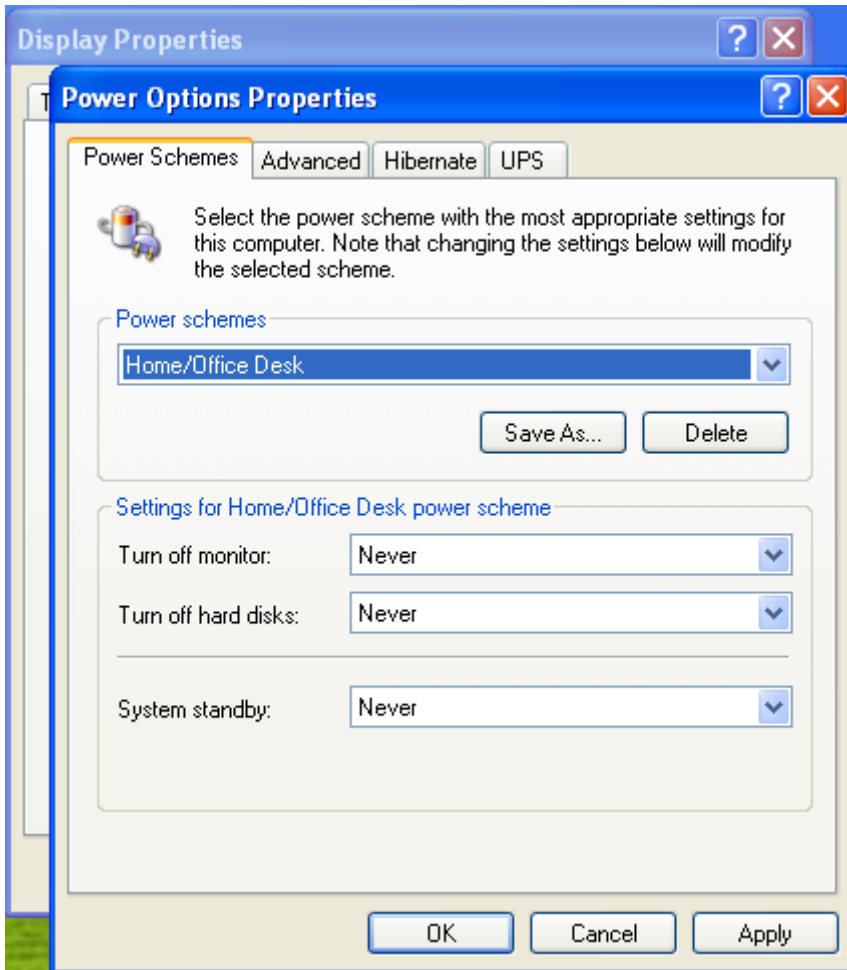
- Right click on the desktop and select **Properties**.



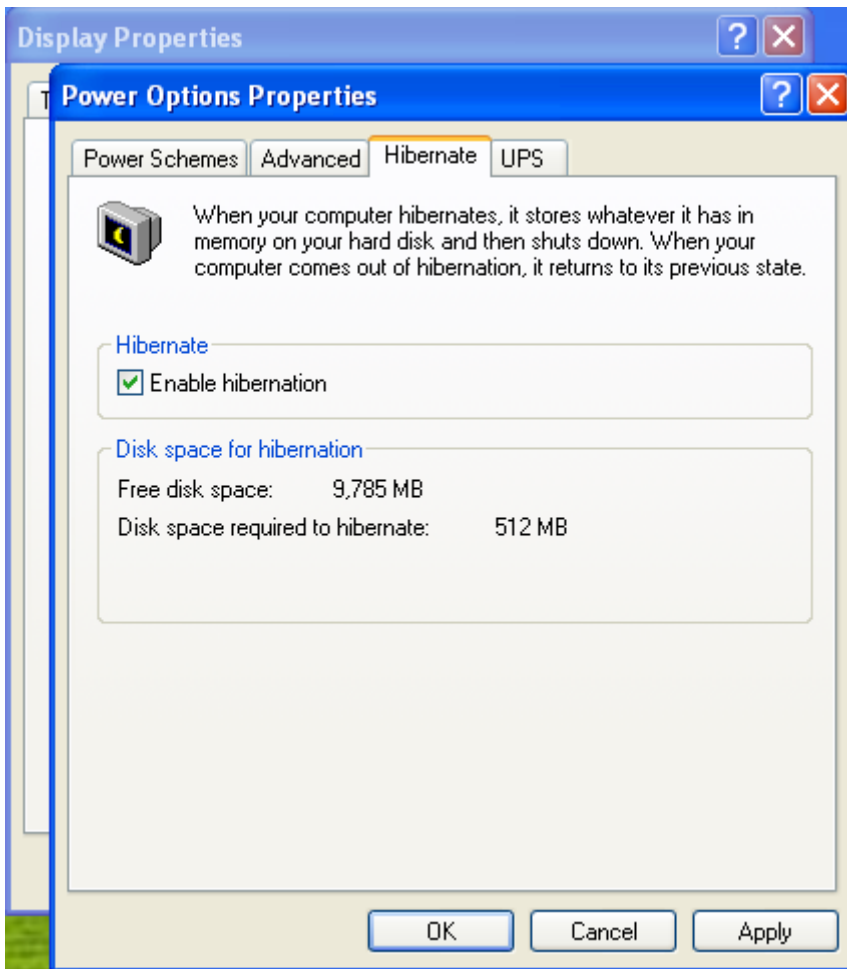
- The **Display Properties** window opens. Select the **Screen saver** tab. Disable the screen saver selecting **(None)** from the drop down list.



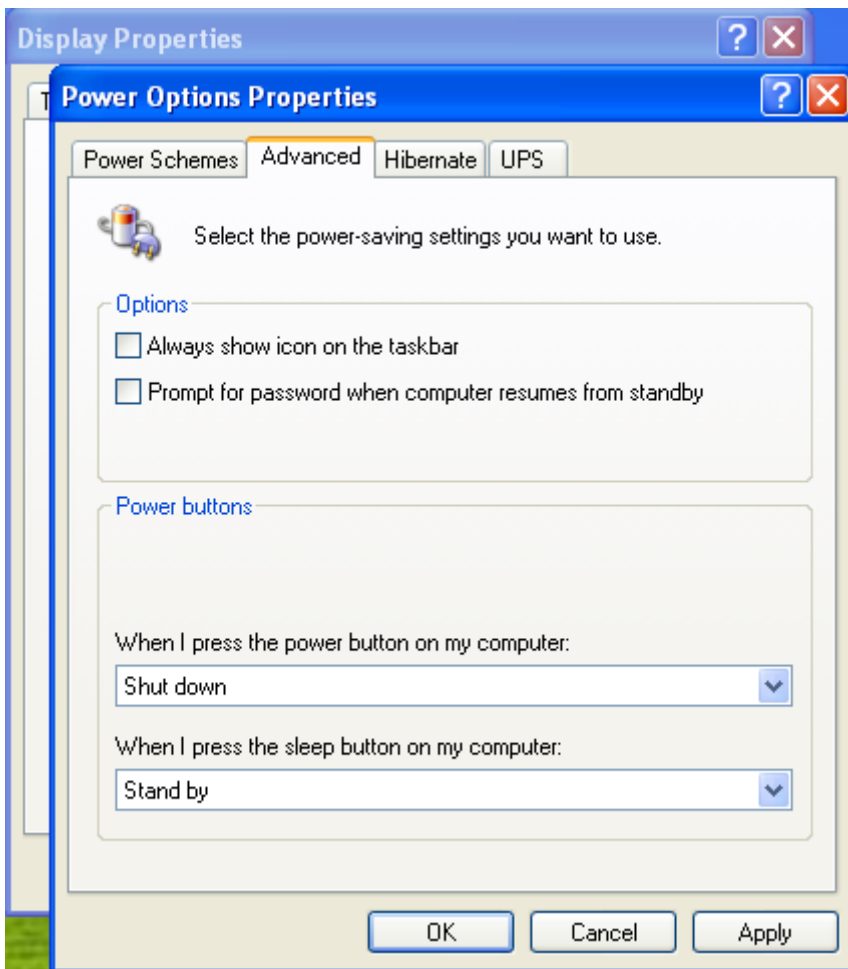
- Click on the **Power...** button at bottom left; the **Power Option Properties** is shown. In the **Power Schemes** tab, select **Never** for the following options:
 - Turn off monitor:
 - Turn off hard disks
 - System standby



- Select the **Hibernate** tab and check **Enable hibernation**



- Select the **Advanced** tab and uncheck **Prompt for password when computer resumes from standby**



Click on **OK** on the **Power Option Properties** and **Display Properties** windows.

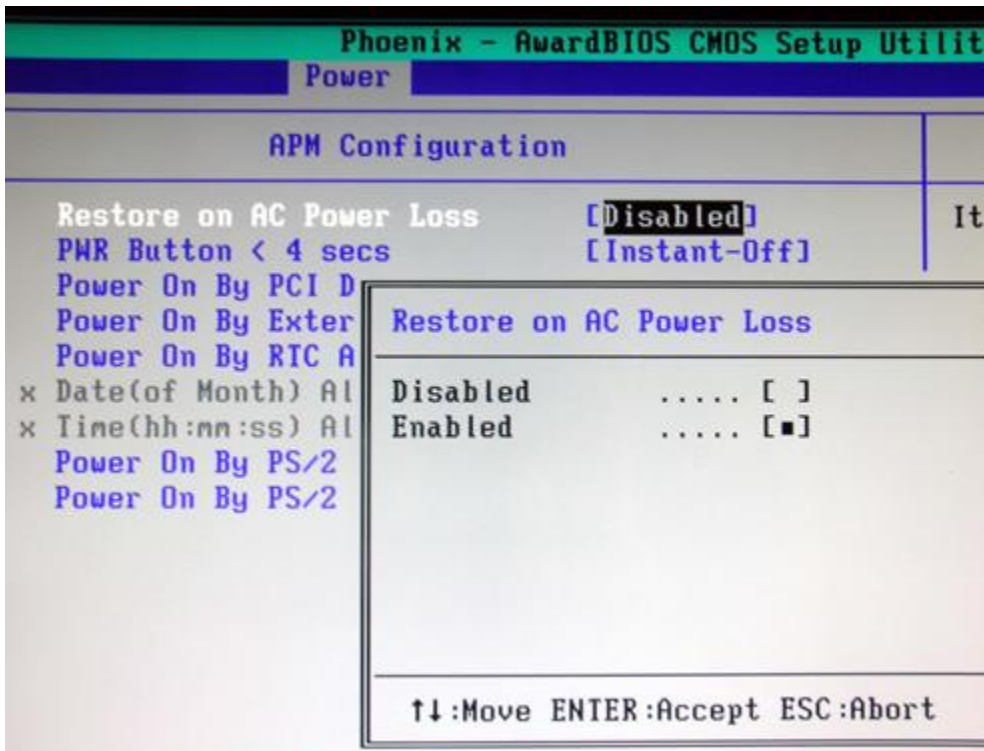
Power outage

This configuration is not available on every PC. If unavailable the PC will restart automatically in case of power outages. The instructions and screenshots may be slightly different for your BIOS.

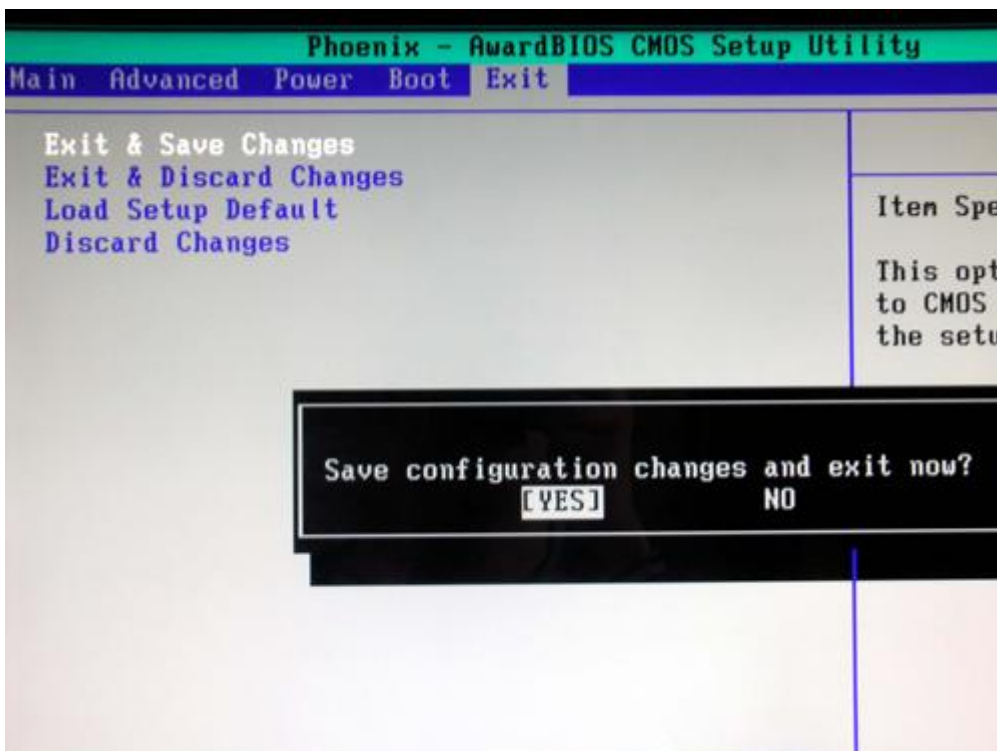
To have a system restart after a power outage you can use the options available on latest BIOSes.

To enable a system restart on power loss do the following:

- During the POST (Power-On Self Test), hit the **Canc** button to open the BIOS interface;
- Select the *Power* menu using the keyboard arrows;
- Within the *Power* menu, select *Restore on AC Power Loss*;
- Hitting **Enter** the available options are shown;
 - *Disable*: the PC will be left powered off after a power outage
 - *Enable*: the PC will restart itself after a power outage



- Select *Enable* and hit the **Enter** key
- Using the keyboard arrows, move to the Exit menu and select the *Exit & Save Changes* option. Hit Enter two times to confirm saving.



Notice: refer to your main board manual because the BIOS interface can be different.