



How to configure bluetooth for use with Web Signage Player

For the Bluetooth marketing, Web Signage Player needs a supported Bluetooth peripheral. If not available, the related functionalities will be the disabled automatically.

The Bluetooth functions are available for the following operating systems:

- Windows XP SP2
- Windows Vista

The following Bluetooth drivers are supported:

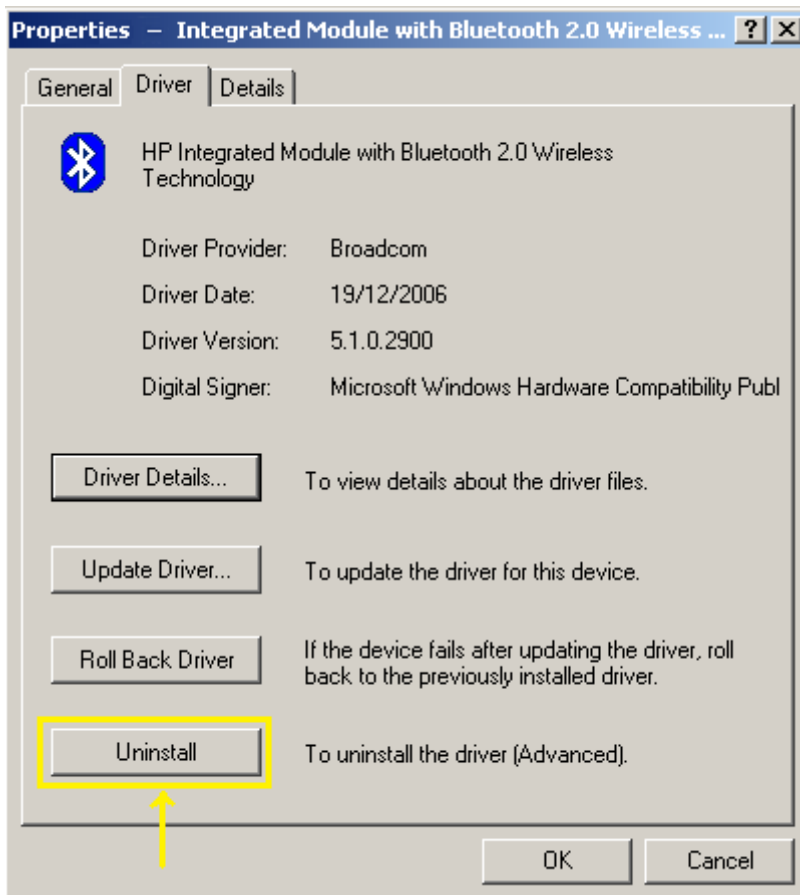
- BlueSoleil
- Microsoft
- Toshiba 4.2 o sup.
- WidComm 5.1.0.1100 o sup.

The Broadcom drivers are not supported. Anyway it is possible to use any Bluetooth interface with the native Microsoft drivers of the operating system. To force the use of Microsoft drivers, refer to the following instructions.

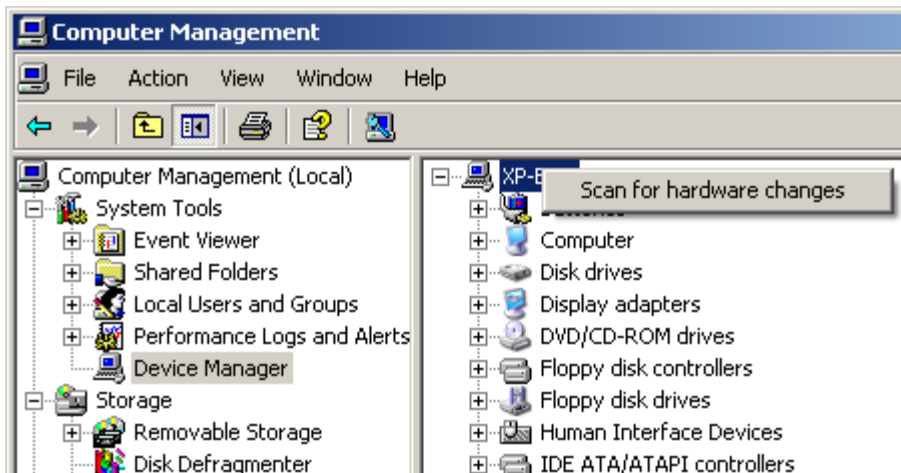
Procedure A - The drivers are already installed

If you still haven't installed the drivers for your Bluetooth peripheral, follow the procedure B.

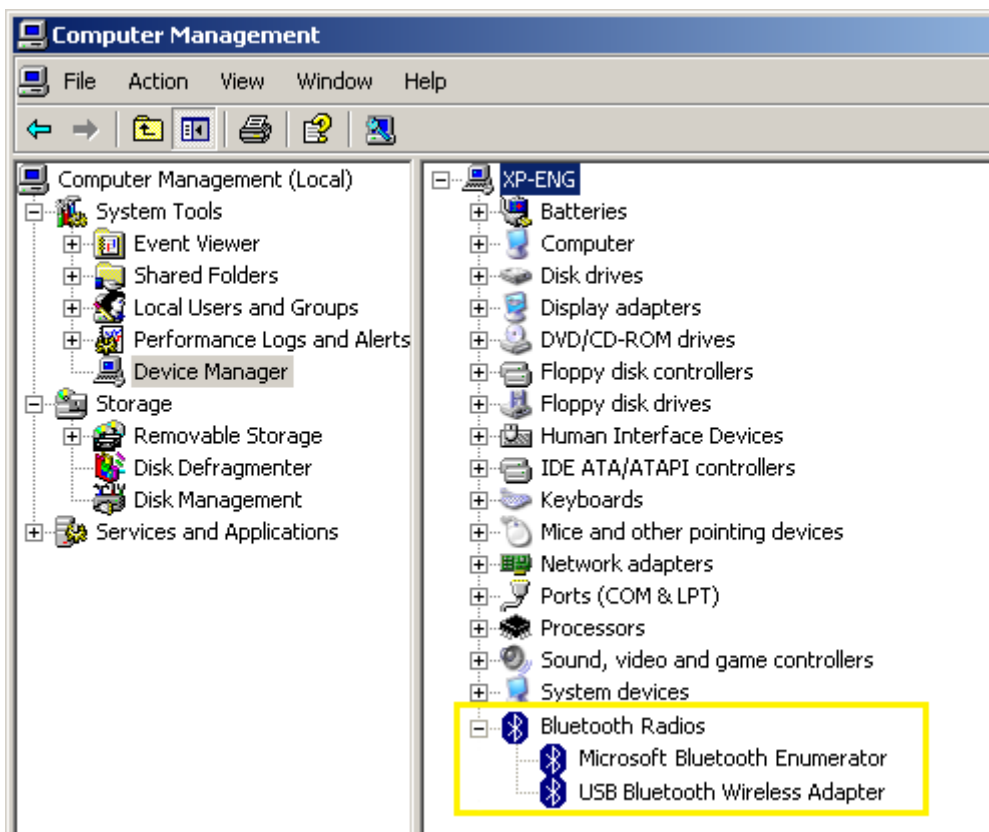
1. Uninstall the drivers supplied with the Bluetooth device and restart your PC.



2. In Computer Management, let Windows detect your Bluetooth peripheral and install the generic USB Bluetooth Wireless Adapter drivers. Be sure to remove all drivers supplied with your device. Do not use the driver disk.



3. If the installation of the generic drivers is successful, you can start using your Bluetooth device. Pay attention that the installation procedure may take a while.

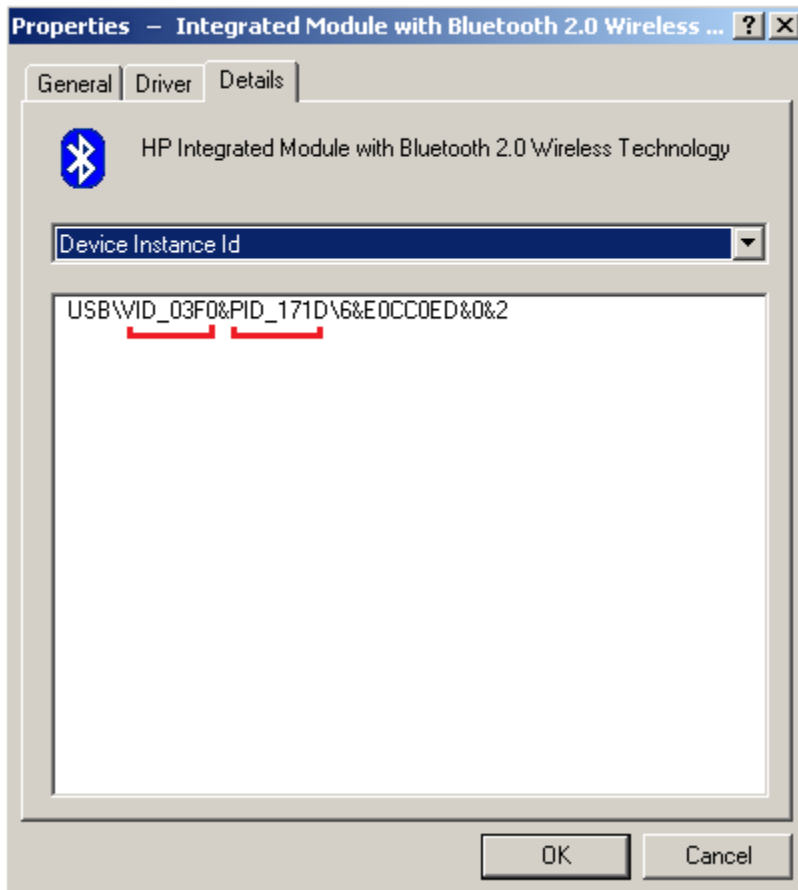


Procedure B - The device driver is not installed

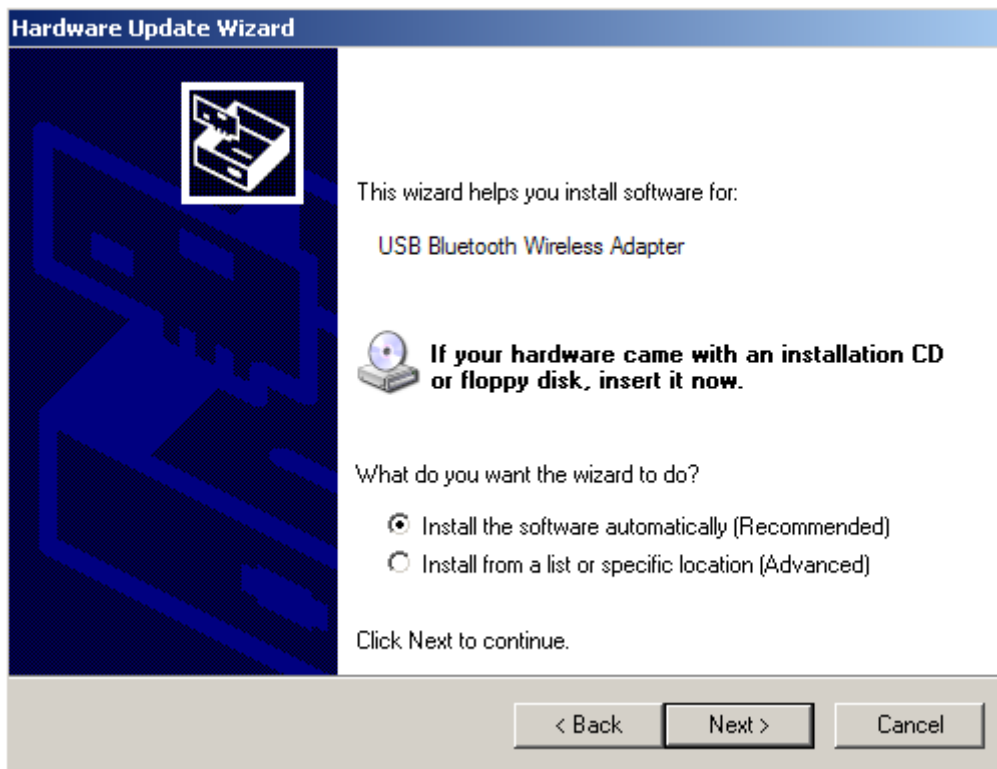
If the drivers are not installed, Windows will probably show in the Device Manager the peripheral with a yellow question mark icon.

Proceed as follows:

1. Open Windows Explorer and go to the **Windows** folder. Make sure to have the "Hide protected operating system files" option unchecked on the Folder options window.
2. Find and open, from within the **inf** folder, the file **bth.inf**
3. Open the Device Manager and look at the device properties (right click/Properties on the yellow question mark icon):



4. Find and note down the two codes starting with VID_ and PID_, for example VID_03F0&PID_171D
5. Within the *bth.inf* file, find the **USB Bluetooth Wireless Adapter** string and replace the values of the VID and PID codes with those found earlier.
6. Save the *bth.inf* file and restart Windows
7. If the device is not found automatically, try to scan for hardware changes or disconnect and reconnect the peripheral.
8. Be sure to select "**Install the software automatically (Recommended)**"



Bluetooth devices are available in three power classes:

Class	Power (mW)	Power (dBm)	Approx. range (m)
Class 1	100	20	100
Class 2	2,5	4	10
Class 3	1	0	1